

2023

ALUMINUM ALLOY GAZEBO INSTALLATION MANUAL

Type 175 simple style





Introduction

Thank you for choosing our products, this installation instructions to 175 simple pavilion for installation tutorial demonstration, the actual construction process should be carried out in accordance with the standard construction specifications, and make corresponding adjustments according to the actual situation, and equipped with safety helmet, labor gloves and other protective equipment, and in strict accordance with the installation steps, the use of correct and qualified installation tools, Ensure the smooth and safe installation process.

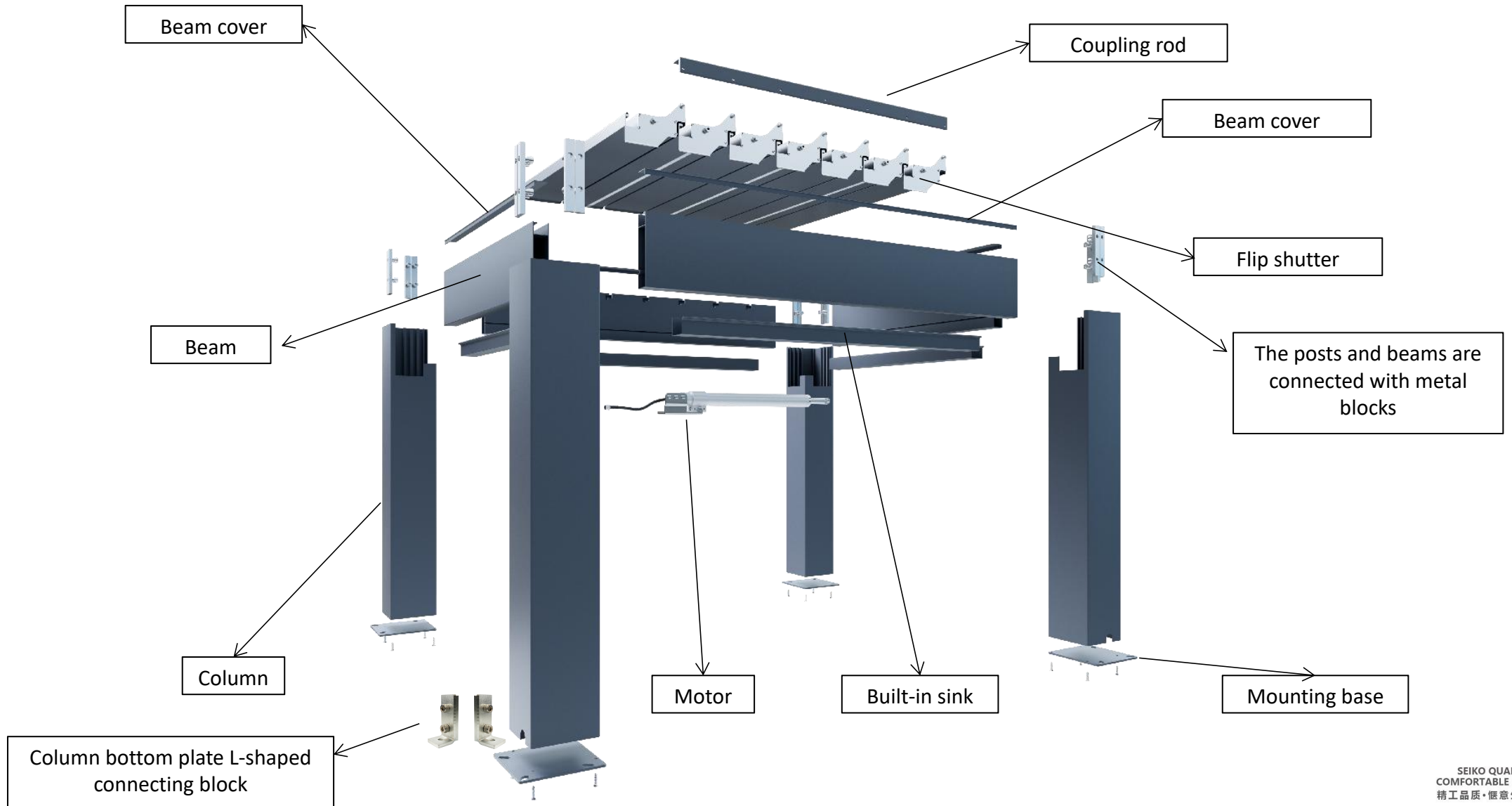


Scan Code View
installation video tutorial

Catalogue:

1、 Structural diagram of the pavilion-----	(03)
2、 Tool preparation-----	(04)
3、 Mounting column-----	(05)
4、 Mounting beam-----	(06)
5、 Install flip shutter-----	(08)
6、 Install the coupling rod-----	(09)
7、 Mounting beam cover-----	(10)
8、 Install motor-----	(11)
9、 Equipment debugging-----	(12)
10、 Fixed pavilion-----	(13)

1. Structural diagram of the pavilion



2. Prepare tools



Jackhammer



Impact drill



Hexagon Wrench Key



Ladders



A movable wrench



Labor gloves



Safety hat

3. Install the column

Ensure that the ground level of the installation position is level before installation.



1. Find the two wires with lamp belt and motor label on the power box (three wires if equipped with windproof shutter).



2, from the bottom of the column into



3, protruding from the top, convenient after installation



4. Take out the L-shaped bottom plate connecting block and install it in the middle of the three slots of the column



5. Install two L-shaped connecting blocks on a column. The bottom of the connecting pieces should be parallel to the edge of the column and tightened with a hex wrench



6, finally install the column bottom plate, a total of 8 screws fixed, the rest of the column is the same installation method.

4. Install the beam



1. After the four columns are assembled, put them in the installation position and prepare to install the beams.



2, the power box does not need to be put into the column, according to customer demand and actual situation.



3, the power box also can be installed on the wall, or separately stored.



4. Assemble the beam and built-in sink, which are connected by grooves



5. The edge of the built-in sink should be stopped near the mounting hole of the beam



6. The beam with the motor should be installed on the column with the power cord and lamp.

4. Install the beam



7. Put the connecting block on the beam into the slot of the column.



8. Connect the labels of the light belt and motor line on the beam to the lines with the same labels on the column. After the connection is completed in the direction of the arrow, put the lines back into the column



9. Lock the beam coupling block with the hex wrench.



10. Continue to install the remaining beams and built-in sinks in the same way



11. Pay attention to the fact that the beam is the same length as the motor beam, and the one with a row of mounting holes is the opposite beam, and the rest is the ordinary beam



12. all beams after installation should remember to lock the connecting block, if there is an optional windproof shutter, should be installed after the completion of the beam, start to install windproof shutter.

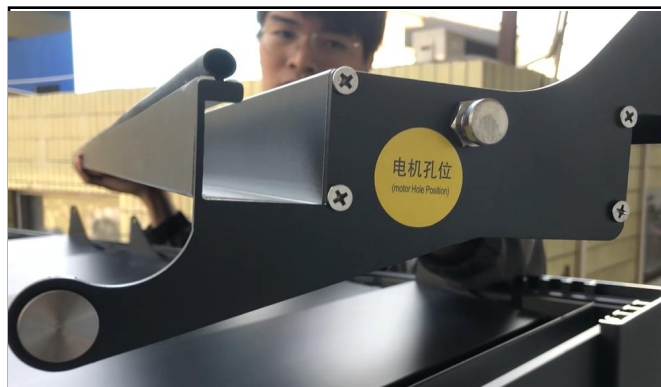
5. Install flip shutter



1. When installing flip shutter, pay attention to the installation hole on the beam of the motor, there will be a label for the corresponding shutter. When installing, install according to the sticky note paper, and the one without label paper is the ordinary installation



4. Connect the labeled line on the louver with the line with the same label on the beam



2. The label paper on the side of the louver should be installed on the installation hole of the beam with the same sticker



5. Put the connected wire back into the slot of the beam



3. pay attention to the installation, louver foot end cover is up, for the installation of connecting rod

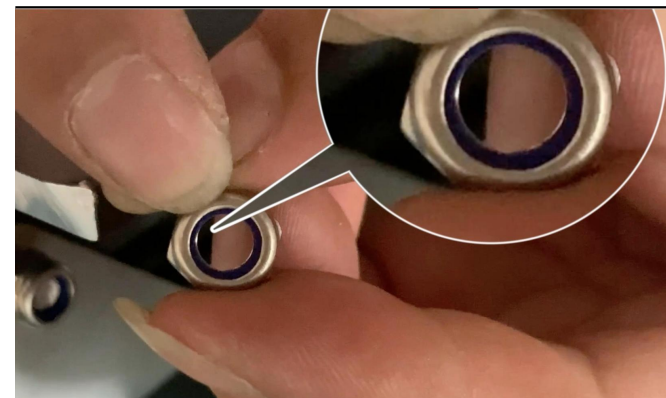
6. Install connecting rod



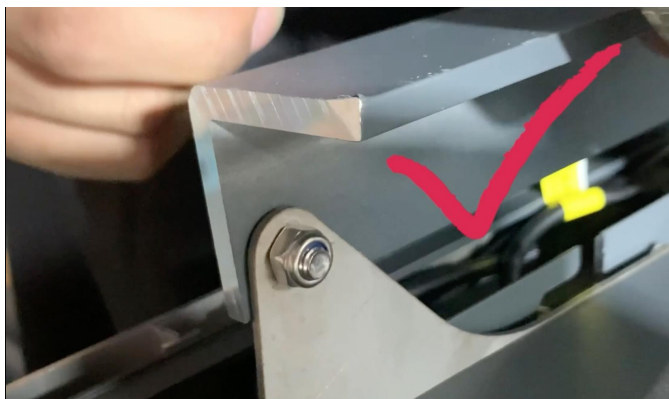
1. Find out the anti-loose screw package for the installation of connecting rod



2. Preinstall the connecting rod with the hex wrench



3. There are blue rubber rings in the lock nut

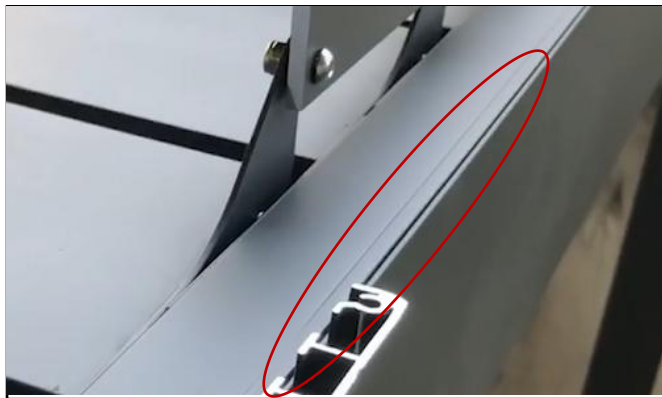


4, tightening only need to tighten the nut until you can not see the blue rubber ring, remember not to screw too tight, otherwise it will affect the flip of the louver

7. Install the beam cover plate



1. After the coupling rod is installed, you can begin to install the beam cover plate



2. The groove on the cover plate faces outward



3. Fix the cover plate with self-tapping screws. The screws should be hit on the groove of the cover plate, and the position can be selected near the column



4, the rest of the cover plate is also the same installation method, according to the length of the beam is different, generally to play more than 3 screws fixed

8. Install the motor



1. The motor has been installed on the beam before leaving the factory, and it has passed the operation test. We only need to reinstall the motor on the louver



2. Unscrew the lock nut on the motor louver first



3. Switch on the power, select 01 channel on the remote control, press the uplink button, and let the motor move forward a little



4. Move the motor to the appropriate position, press the pause button



5. Install the screw on the motor, tighten the anti-loose screw, and the installation is complete

9、Equipment debugging

Once the gazebo is installed, you can test the equipment, turn on the power, and take out the remote control (the remote control has been paired with the gazebo and the light belt before it is manufactured and does not need to be re-paired), all parts can open and close normally to prove the normal operation of the equipment. [CC] Universal Channel, [01] shutter motor, [02] lamp belt, [03] roller shutter, select multiple roller shutter channels, and so on.



The uplink key

Pause key

Downlink key

Channel switching



[CC] : Universal Channel one-click to turn all functions on/off



[01] : The Motor Channel controls the louver motor separately. The up-link key opens, the down-link key closes, and the pause key controls the louver opening and closing angle.



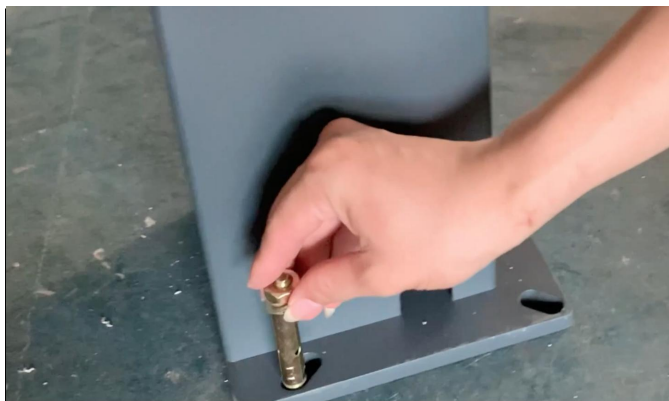
[02] : the lamp-band channel controls the Louver lamp-band independently, the uplink key opens, and the downlink key closes.



[03] : the shutter channel controls the shutter motor separately. The up-link key opens, the down-link key closes, and the pause key controls the shutter opening and closing angle.

10、Fixed Gazebo

After installation and testing, it can be fixed to the bottom plate of the gazebo column and fixed with the expansion screw by the percussion drill.



1、 All equipment installed, after testing, you can use the expansion screw on the column roof fixed installation

Thanks for watching!